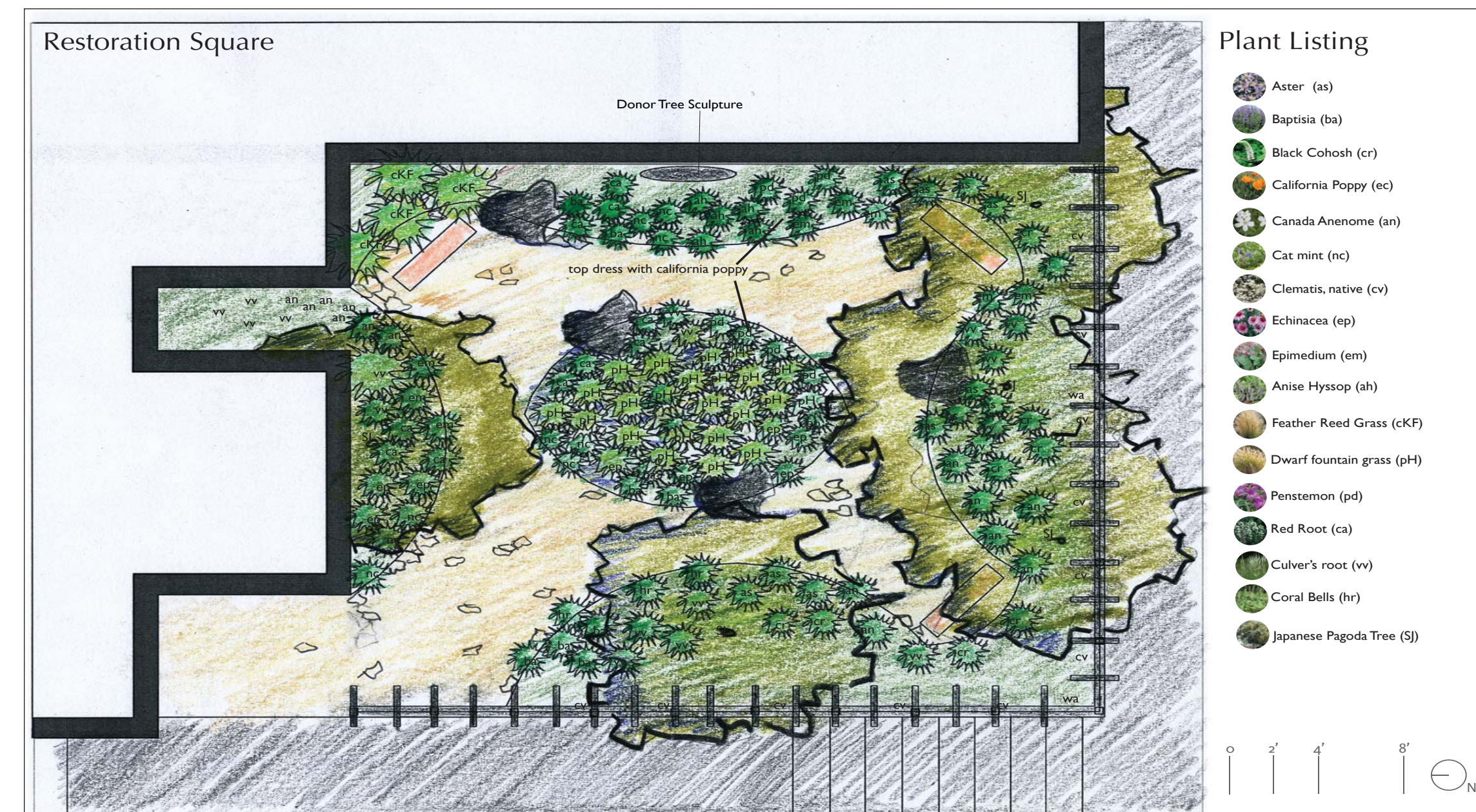


Restoration Square

Proposal for Holyoke Hospital by Stephen A. Roberts Landscape Architecture

The Restoration Square provides a welcoming, peaceful refuge for patients, visitors and staff at Holyoke Hospital. The artistic Donor Tree located on the East wall, recognizes the generosity and commitment of the community. The tree represents the human desire to give, and to always strive for a brighter future. The paving stones can also be engraved as an additional means to recognize the friends of Holyoke Hospital.

While the garden is near to the main entrance, it is designed to be used as a place to sit or just simply stroll through. Japanese Pagoda Trees are strategically placed to provide relief from the afternoon sun. Benches are also placed to take a rest or even a break from the day's work. An arrangement of plants, many of which have healing attributes, will be within the beds to be appreciated for their flower color and texture. A trellis has also been proposed to help enclose the space, giving it a more intimate ambiance. A native vine will grace the trellis, adding a spectacular bloom and fragrance during the late summer months.



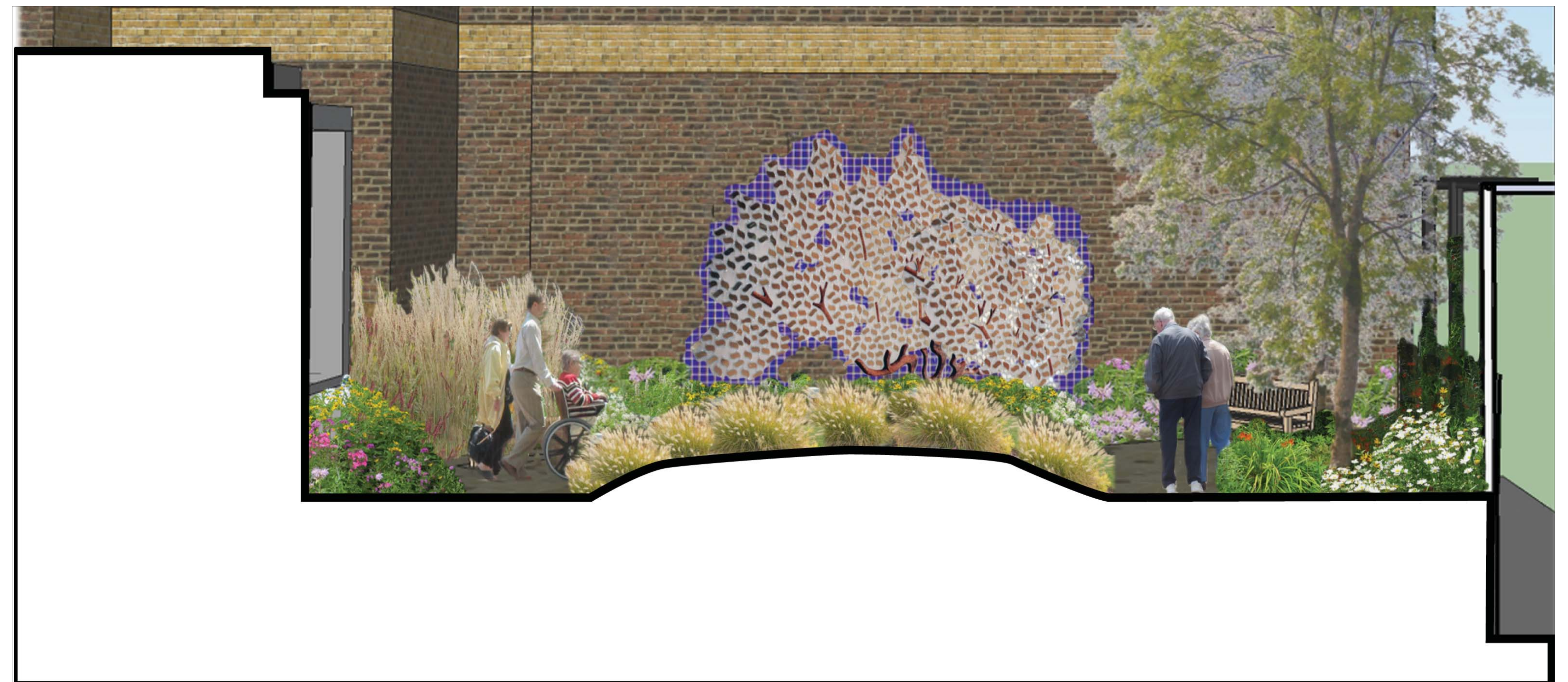
Plant Listing

- Aster (as)
- Baptisia (ba)
- Black Cohosh (cr)
- California Poppy (ec)
- Canada Anemone (an)
- Canada Hyssop (ah)
- Cat mint (nc)
- Clematis, native (cv)
- Echinacea (ep)
- Epimedium (em)
- Anise Hyssop (ah)
- Feather Reed Grass (cKF)
- Dwarf fountain grass (pH)
- Penstemon (pd)
- Red Root (ca)
- Culver's root (cw)
- Coral Bells (hr)
- Japanese Pagoda Tree (Sj)

Plan view



Perspective



Section / Elevation